



40S



60S



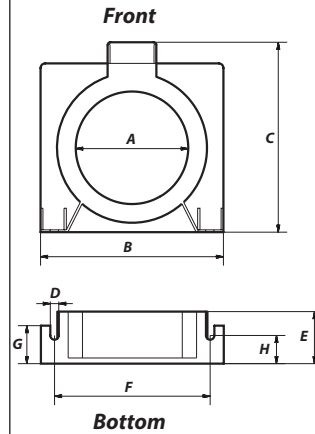
80S



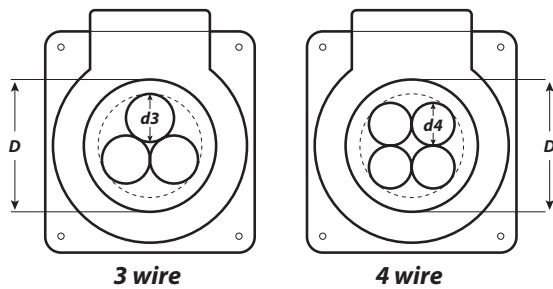
120S

ZCT40S 60S 80S 120S

Case Dimensions



Calculation to determine Inner Diameter of ZCT required



MODEL	D ZCT inner diameter (mm)	d3, 3 wire Up till wire diameter (mm)	d4, 4 wire Up till wire diameter (mm)
ZCT 40S	40	14	12
ZCT 60S	60	23	21
ZCT 80S	80	32	29
ZCT 120S	120	51	46

Example:

For a single core CU / PVC insulated, non-sheathed 450 / 750 V 50mm² conductor, it's nominal overall diameter is 11.7mm. To pass 4 wires through the ZCT, we can use ZCT40S as the maximum diameter it can support is up till 12mm.

DIMENSION

(mm)	ZCT Model			
	40S	60S	80S	120S
A	40	60	80	120
B	89	105	130	180
C	94	110	135	195
D	6	6	6	6
E	37	37	37	37
F	75	87	112	159
G	27	27	27	27
H	20	20	20	20

Ordering Information

MODEL	DESCRIPTION	WEIGHT
ZCT40S	40mm inner diameter	0.16 kg
ZCT60S	60mm inner diameter	0.20 kg
ZCT80S	80mm inner diameter	0.28 kg
ZCT120S	120mm inner diameter	0.57 kg